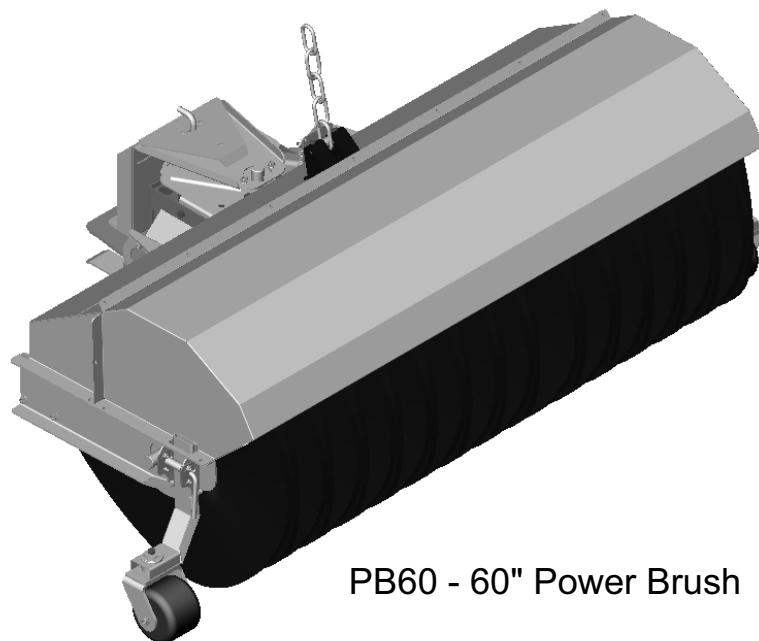

Quad Power Brush

PB60

Assembly/Operators/Parts Manual

English Language Version 05

Printed: January, 2005



PB60 - 60" Power Brush

Read & Save this Manual

QUADIVATOR INC.
1000 6th Ave. NE
Portage La Prairie, MB
Canada, R1N 3C5
www.quadivator.com

Part #: 89754

FOREWORD

You are now the owner of a Quadivator PB60 Power Brush. To obtain the best use of your Power Brush, read this manual carefully. It will help you become familiar with the operation and maintenance of the Quadivator PB60. It is Quadivator Policy to use all research, design and manufacturing improvements to improve our mower. This may result in some of the minor parts in the manual becoming outdated.

Quadivator will have the most up to date parts and service information – call 866 770-2169 for service information and parts orders!

Contact Information

Quadivator Inc.
1000 – 6th Ave NE
Portage la Prairie, MB
Canada, R1N 3C5

E-mail: mailbox@quadivator.com
Website: www.quadivator.com
Tel. 866 770-2169
Fax. 204 239-4271

Table of Contents

1. Safety First
2. Safe Operation
3. Setup/Operation Instructions
4. Replacement Parts
5. Quadivator Warranty Statement
6. Warranty Registration



SAFETY FIRST

This symbol, the industry's "Safety Alert Symbol", is used throughout this manual and on labels on the device itself to warn the possibility of personal injury.

Read these instructions carefully.

It is essential that you read the instructions and safety regulations before you attempt to assemble or use this brush.



DANGER

Indicates an immanently hazardous situation, which if not avoided, will result in death or serious injury.



WARNING

Indicates a potentially hazardous situation which, if not avoided, could result in death or serious injury.



CAUTION

Indicates a potentially hazardous situation which, if not avoided, may result in minor or moderate injury.

Pre-Delivery Check List

Check off all items as they are found satisfactory or after adjustments are made:

- All safety shields and guard are securely in place!
- All decals are in place and readable!
- Tighten all hardware



CAUTION

To help prevent personal injury from thrown objects, never walk or stand in front of the brush during run-in or operation!

Start the Quadivator Power Brush and allow it to run for 5 – 10 minutes, check for excessive operation or unusual noise.

The Quadivator Power Brush has been tested and to the best of my knowledge, is ready to be delivered to the customer!

Date Predelivered –

Signature –

OWNER's Register

Name –

Address –

City/Town –

State/Prov. –

Mail Code -

Model & Serial # –

Date Sold –

DELIVERY Checklist

- Tell the customer not to remove any of the safety shields or guards.
- Review the Quadivator Warranty with customer.
- Review with the customer the Safe Operation and Service of the Power Brush.
- Review with the customer the Daily and Periodic Maintenance.
- Review with the customer the Daily and Periodic Inspections.
- Parts & Service Availability.

Prior to delivery to the customer, do the following:

- Record Serial Numbers for the Quadivator Products
- Sign and remove this section for the dealer's record.
- Give the customer the Operator's Manual and encourage the customer to read the manual.

Date Delivered –

Signature –

SAFE OPERATION



DANGER Failure to observe the following safety instructions could result in serious injury and or death.

1. GENERAL OPERATION

.1 Read the operating and service instruction manual carefully.

.2 Be thoroughly familiar with the controls and the proper use of the equipment. Know how to stop the unit and disengage the controls quickly.

.3 Only allow responsible adults, who are familiar with the instructions, to operate this machine. Never allow children to operate the equipment.

.4 Be sure the area is clear of bystanders, children and pets before operating. Stop machine if anyone or anything enters the area.

5. NEVER CARRY PASSENGERS while sweeping with the PB60



ALWAYS attach the clip end of the Tether Chord to your belt, until you dismount from the ATV. The switch the chord is attached to will shut off the engine if pulled deliberately or by inadvertent dismount from the ATV seat.

.5 Thoroughly inspect the area where the equipment is to be used and remove all foreign objects.

.6 Disengage clutch on ATV and shift ATV into neutral before starting the engine (motor).

.7 Never attempt to make adjustments while the engine (motor) is running

.8 Always wear safety glasses or eye shields during operation or while performing an adjustment or repair to protect eyes from foreign objects that may be thrown from the machine.

.9 Maintain or replace safety and instruction labels, as necessary. Never tamper with safety devices and check their proper operation regularly.

2. GENERAL DEVICE OPERATION

.1 Do not put hands or feet near or under rotating parts.

.2 Exercise extreme caution when operating on or crossing gravel drives, walks or roads. Stay alert for hidden hazards and traffic.

.3 After striking a foreign object, stop the engine (motor) remove the wire from the spark plug, thoroughly inspect the brush for any damage, and repair damage before restarting and operating the brush.

.4 If the unit should start to vibrate abnormally, stop the engine (motor) and check immediately for the cause. Vibration is generally a warning of trouble.

.5 Stop the engine (motor) whenever you leave the operating position, before making any repairs, adjustments or inspections.

.6 Take all possible precautions when leaving the machine unattended. Disengage the drive, lower the attachment, set the parking brake, stop the engine and remove the key.

.7 When cleaning, repairing or inspecting, make certain all moving parts have stopped. Disconnect the spark plug wire and keep the wire away from the plug to prevent accidental starting.

.9 Do not operate across the face of slopes. Exercise extreme caution when changing direction on slopes. Do not attempt to clear steep slopes.

.10 Never operate the brush without provided guards, plates or other safety protective devices in place.

.13 Never operate the machine at high transport speed and use care when backing up!

.14 Never allow anyone in front of the unit.

.15 Disengage power to the brush when transporting or not in use.

.16 Never operate the power brush without good visibility or good light.

SETUP/OPERATION INSTRUCTIONS

BRUSH MOUNTING

**Please refer to the Power Unit operator's manual for instructions on assembly of the Power Unit.*

.1 Loosen the motor plate on the Power Unit (Refer to Power Unit Manual for illustration)

.2 Take the belt and slide over pulley on broom and the lower pulley on the Interframe as shown below:

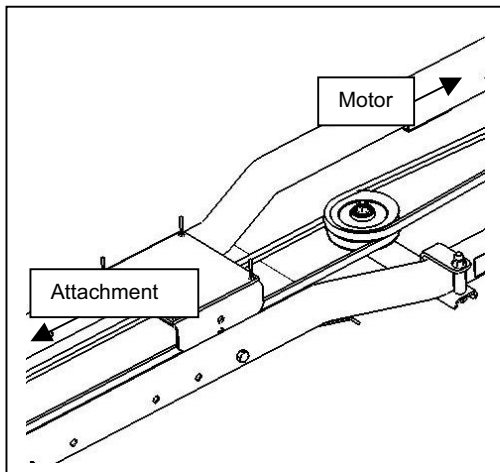


Figure 4-1

.3 Tighten the motor plate on the Power Unit

.4 Engage both locking clips on the brush (one on each side) as shown in Figure 4-2.

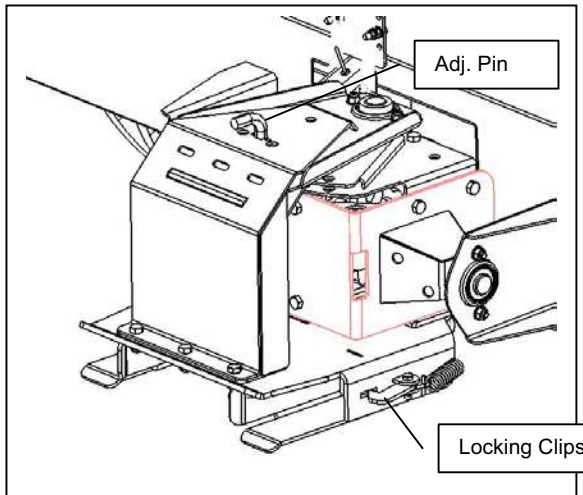


Figure 4-2

.5 Attach the winch cable to the last chain link in order to prevent the brush from hitting the ATV when winch is reeled in. Depending on the winch location of the ATV you might require a higher lift and therefore will need to use the second link, but only if it cannot interfere with the ATV when lifted.

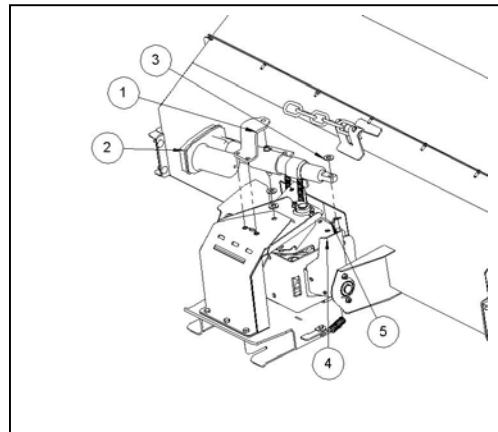
ANGLE ADJUSTMENT

MANUAL

.1 Remove adjustment pin (shown in Figure 4-1) and manually adjust brush to angle desired. Reinsert Pin

ELECTRICAL OPTION

.1 An electrical pivot option is available and is setup as shown in the Figure 4-3



1. Bracket 2. Actuator 3. Washers 4. Bracket 5. Pin
Figure 4-3

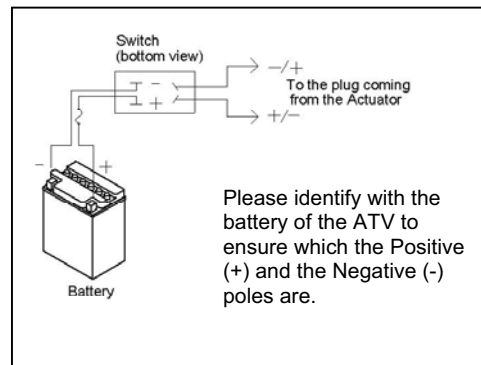


Figure 4-4

.2 Attach the supplied wiring harnesses to the ATV as shown in Figure 4-4

SETUP/OPERATION INSTRUCTIONS

.3 Attach the Switch to the front rack of the ATV with the bracket.

GAGE WHEELS

.1 The gage wheels (one on each side) are to be used on surfaces that are not hard enough for the full weight of the brush, such as sweeping leaves on grass. The wheels are not needed for surfaces such as concrete or asphalt.

.2 When not used the gage wheel assemblies can either be removed from the unit or stored upside down in the same holder and tightened (as described in .3).

.3 Lift the Brush and adjust the wheels to the desired height, depending on how hard a surface is being brushed. Tighten the gage wheels with the offset locking pins provided (Figure 4-5). If the locking pins become too loose and cannot be tightened enough, adjust the tabs by sliding in (Figure 4-5) to achieve proper locking tightness.

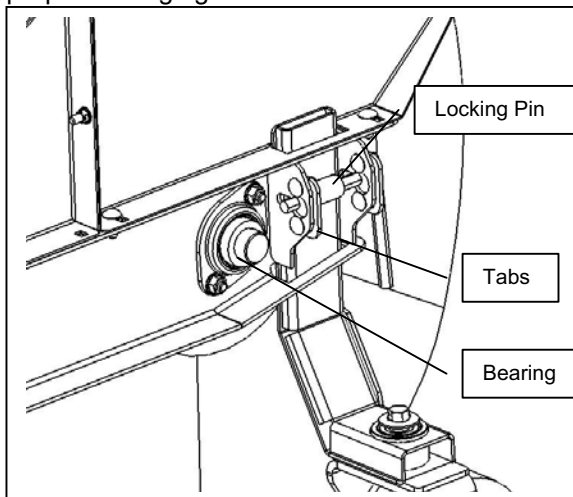


Figure 4-5

GENERAL OPERATION

.1 Start brush engine and warm up at low RPM.

.2 Increase brush engine to full throttle and start operating. (Refer to the Power Unit Manual for illustrations of the throttle controls)

.3 Operate brush so wind blows debris away from engine, power unit and operator

.4 For a longer lasting brush take note of the following:

- .1 More pressure does not produce a better sweep
- .2 A level brush lasts longer
- .3 The faster the ground speed the faster the brush will wear.

4. Drive at a low speed

.5 When climbing curbs or loading brush on trailer, raise brush to maximum height and drive slowly. The bristles might come in contact with the curb or trailer ramp.

STORAGE

.1 Keep all nuts, bolts and screws properly tightened and know unit is in working condition

.2 Remove weight from the gage wheels and bristles by putting blocks under the frame or axle as well as under the gearbox for mounting when coming out of storage.

.3 Refer to the Power Unit manual on storage instructions for the Power Unit.

MAINTENANCE

.1 Refer to engine manual for servicing and lubrication specifications and intervals.

.2 Clean engine air cleaner frequently (Hourly, if subject to a lot of dust)

.3 Clean debris from engine and gearbox area after each use.

.4 The gearbox is sealed and therefore the oil level cannot and is not required to be checked.

.5 Bristles wear off after time and will be in need of replacement:

- .1 Disconnect roller chain that attaches gearbox to the brush's sprocket
- .2 Remove the bolted front shield for easier access if desired, but not necessary

SETUP/OPERATION INSTRUCTIONS

.3 Remove the bearing (Figure 4-5) on each side of the brush and slide out shaft

.4 Remove bolts from bristle shaft and replace all bristles at once. (Refer to Page 3 of the Parts Replacement section of this manual for an illustration) Not replacing all at once might cause an uneven sweeping result as well as the longer bristles wearing off faster.

.6 Replacing and Adjusting belt and belt tension:

.1 The belt tension is determined by the position of the motor on the Power Unit. To adjust the tension loosen the motor bolts on the Power Unit and slide motor to proper tensioned

position and retighten bolts.

.2 To replace the belt, perform previous step and unhook locking clips as shown in Figure 4-2 and replace belt.

.7 Servicing roller chain that drives the rotor:

.1 To replace the roller chain, remove bolts that hold the springs on the idler and remove springs (Figure 4-6)

.2 Find the connector link on the chain and disconnect

.3 Roll chain out and insert the replacement

.4 For easier access to the gear on the rotor, remove the top cover on the brush before replacing the chain.

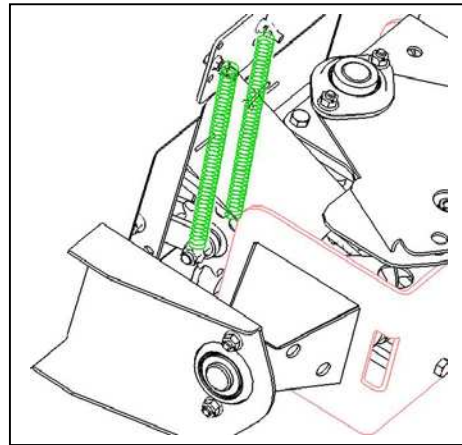
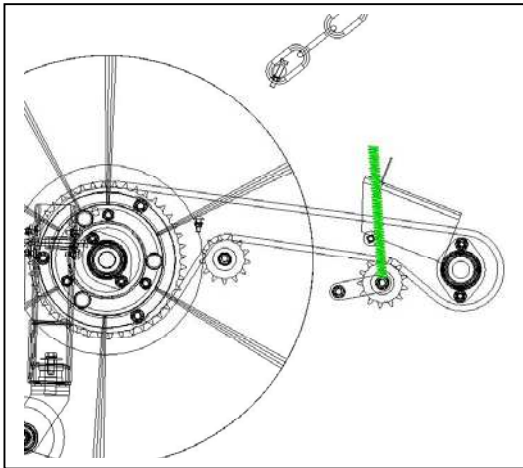


Figure 4-6

REPLACEMENT PARTS

The following pages contains part illustrations and replacement part numbers of all components of the Quadivator Power Brush.

To obtain replacement parts, please contact your Quadivator Dealer for Service. To locate the nearest dealer, please contact a Quadivator Representative using the contact information at the beginning of this manual.

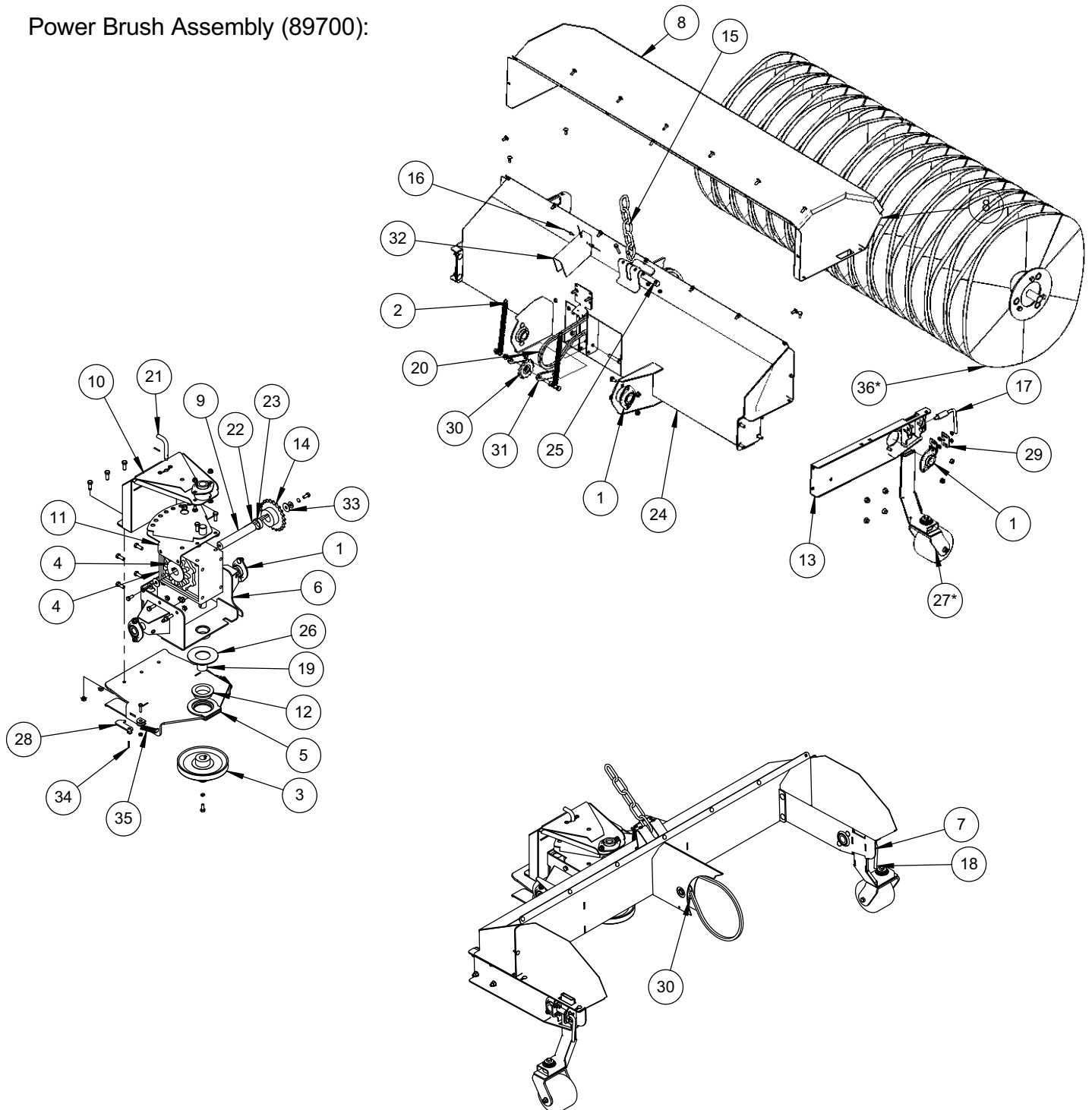
When ordering parts – please have the following information on hand:

- Part Number you are looking for.
- Model and Serial Number of the machine.
- Quantity Required.

To ensure warranty support for your Quadivator Product, please fill out the Warranty Registration card included in this Operator's manual.

Power Brush Assembly

Power Brush Assembly (89700):



Power Brush Assembly

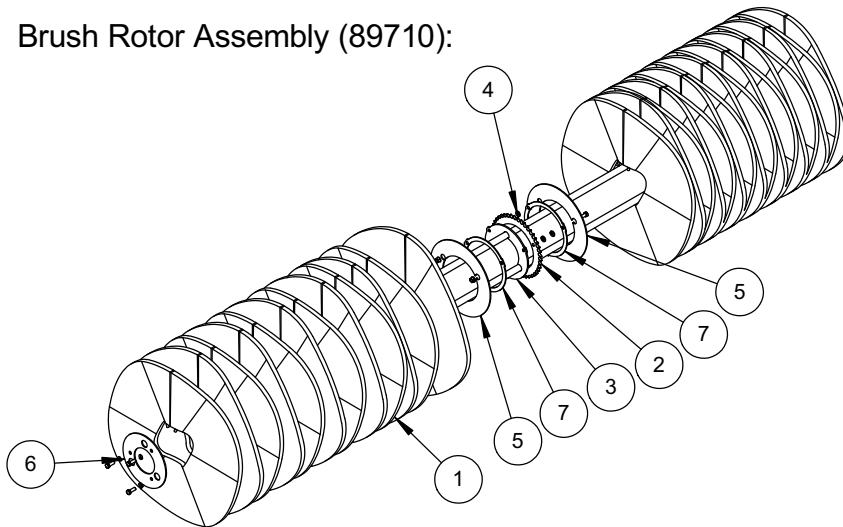
Power Brush Assembly - Parts List (89700):

ITEM	Default/QTY.	PART	DESCRIPTION
1	5	14618	Bearing Unit-Pressed Steel Housing SBPFL205-16
2	2	88651	Spring, Extension - Tensioner Arm
3	1	89075	W.A. - 7" Pulley
4	1	89550	Gearbox, Worm - 10:1 Ratio
5	1	89705	W.A. - Mounting Frame
6	1	89715	W.A. - Frame, Brush
7	1	89725	W.A. - Sweeper Arm, LH
8	1	89730	W.A. - Hood, Sweeper
9	1	89734	Drive Shaft - Sweeper
10	1	89740	Weldment - Anchor Pivot
11	1	89745	Weldment - Brace, Pivot
12	1	89751	Bushing - Gearbox Mount
13	1	89755	W.A. - Sweeper Arm, RH
14	1	89760	W.A. - Sprocket
15	1	89910	Chain Assy - Lift
16	3	70924280	Pop Rivet, Aluminum 1/8 Dia x .390 Long
17	1	89770LH	Weld't-Caster Lock Pin-LH
18	1	89770RH	Weld't-Caster Lock Pin-RH
19	1	89788	Tube - Spacer
20	1	89809	Chain -#50 x 103P w/Offset & Conn
21	1	89812	Pin - Pivot Stop
22	1	89813	Key -5/16 x 100
23	1	89814	Bushing -Spacer-Sprocket
24	1	89830	Weld't-Rotor Frame Backbone
25	1	89846	Pin-Lift
26	1	89852	Thrust Washer -UHMW
27*	2	89855	Assy - Gage Wheel
28	2	89863	Latch
29	4	89874	Plate -Lock Adjust
30	2	89887	Idler Sprocket 50 Pitch x 13t -17mm ID
31	2	89889	Bracket - Tensioner Mount
32	1	89909	Shield - Belt -Rubber
33	3	FNW.375x1.25	Flat Fender Washer 3/8"ID x 1.25"OD x .06 Thick
34	3	RP.125x1	Roll Pin- 1/8 x 1
35	2	89865	Spring-Comp-.625 OD x 2.75FL x .054Wire
36*	1	89710	Sub Assy -Brush Rotor

* See next page for sub-assembly part numbers

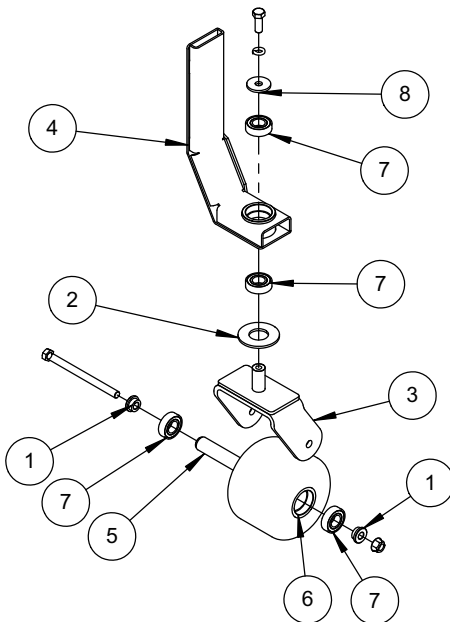
Power Brush Sub-assemblies

Brush Rotor Assembly (89710):



ITEM	QTY.	PART	DESCRIPTION
1	28	88669	Wafer, Blue Poly Conv.
2	1	89517	Sprocket - 44 Tooth x 50 Pitch
3	1	89720	Weld't -Brush Rotor
4	6	89749	Washer Spacer 10 ID x 19 OD x 2.7t
5	2	89771	Chain Guide-Circular
6	2	89793	Plate - Retainer, Waffle
7	2	89833	Shim Spacer -Chain

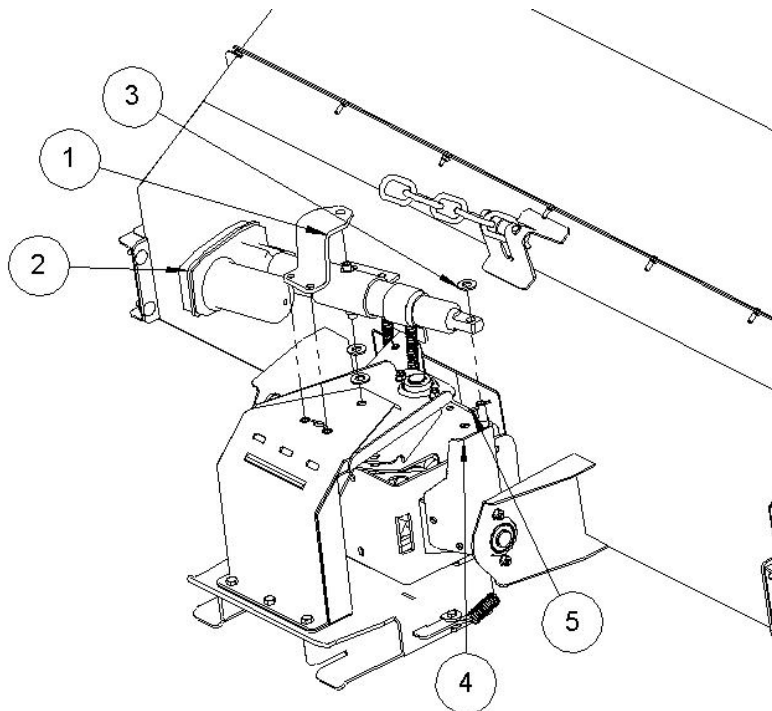
Gage Wheel Assembly (89855):



ITEM	QTY.	PART	DESCRIPTION
1	2	88540	Spacer - Bushing
2	1	89753	Washer - Caster
3	1	89765A	W.A. - Caster Wheel Mount
4	1	89775A	Weld't -Gage Wheel
5	1	89822	Tube -Bearing Spacer -Castor
6	1	89823	Assy-Rubber Wheel
7	4	89824	Bearing 6003-2RS-AAB
8	1	FNW.375x1.25X.12	Flat Fender Washer 3/8"ID x 1.25"OD x .125 Thick

Power Brush Sub-assemblies

Electrical Brush Pivot Option (89900):



ITEM	QTY.	PART	DESCRIPTION
1	1	89906	Bracket - Actuator Base
2	1	86031	Actuator
3	3	FW.5N	Flat Washer 1/2 SAE
4	1	89915	Weld't -Actuator Rod End
5	1	CTP.125x1	Cotter Pin 1/8 x 1
6	1	89930	Actuator Switch/Wiring Harness (not shown)

QUADIVATOR WARRANTY POLICY

The warranty for the Quadivator Product is a limited warranty.

The manufacturer's warranty to the original customer is – the product is free from defects in materials and workmanship for a period of one (1) year from the date of purchase by the original purchaser.

We will repair or replace, at our discretion, parts found to be defective due to materials and workmanship.

The warranty is subject to the following limitations and exclusions:

1. Engine Warranty – all engines utilized on our products have a separate warranty extended to them by the engine manufacturer. Any engine service difficulty is the responsibility of the engine manufacturer and in no way is Quadivator Inc. or its agents responsible for the engine warranty. The Briggs & Stratton Engine Service Hot Line is 1-800-233-3723.

2. Commercial Use – the warranty period for any product used for commercial or rental use is limited to ninety (90) days from the date of original purchase.

3. Limitations – the warranty applies only to products which have been properly assembled, adjusted and operated in accordance with the instructions contained within this manual. The warranty does not apply to any product of Quadivator Inc. that has been subject to alteration, misuse, abuse, improper assembly or installation, shipping damage or normal wear of the product.

4. Exclusions – excluded from this warranty are normal wear, normal adjustments and normal maintenance.

In the event you have a claim under this warranty, you must return the product to an authorized service dealer. All transportation charges, damage or loss incurred during transportation of parts submitted for replacement or repair under this warranty shall be borne by the purchaser. Should you have any questions concerning this warranty, please contact us toll-free at 866 770-2169 or on our web-site at www.quadivator.com. The model, serial numbers, date of purchase and the name of the authorized Quadivator dealer from whom you purchased the Quadivator Product will be needed before any warranty claim can be processed.

This warranty does not apply to any incidental or consequential damages and any implied warranties are limited to the same time periods stated for all expressed warranties. Some provinces and states do not allow the limitation of consequential damages or limitations on how long an implied warranty may last, so the above limitations may not apply to you. This warranty gives you specific legal rights and you may have other rights, which vary from province to province or state to state.

This is a limited warranty as defined by the Magnuson-Moss Act of 1975.

WARRANTY REGISTRATION – Quadivator PB60 Power Brush

Please fax this sheet to (204) 239-4271 or mail it to:

**Quadivator Inc.
PO Box 1127
1000 – 6th Ave NE
Portage la Prairie
Manitoba R1N3C5
CANADA**

Power Brush Model # -

Power Brush Serial # -

Purchased by (Name)

Address-

City

State/Prov/Mail Code

Dealer -

Date Purchased (D/M/Yr)

Thank you!

