



**Single Caster Wheel Assembly
(89350)**

The caster wheels attach to each side of the Interframe. They assist in carrying the heavier weights of attachments, such as the Power Broom and Snow Blower.

Assembly

Installation of caster wheels can be made easier by installing before the attachment is mounted; or removing the attachment.

1. Install the caster wheels to the Interframe. Make sure the mounting bracket is to the outside of the the Interframe.
2. Secure mounting bracket to holes in the Interframe using two 1/2 x 3 hex head bolts and flange lock nuts.
3. Slide the caster wheel leg in the retainer plate of the mounting bracket.
4. Secure the caster wheel using the holes (3) in the caster wheel. Secure with one 1/2 x 1-1/2 hex head bolt and flange lock nut.



Front View of Caster Wheels when installed to the Interframe.

Adjustment

Adjust on a level surface to keep the bottom of the wheel (on the Interframe) - 3/4 inch (19mm) above the ground surface when the front suspension is unloaded. Use the holes (3) in the transport casters.

NOTE: Keep instructions with the Quadivator Operators Manual - Operation and Parts Information are included.

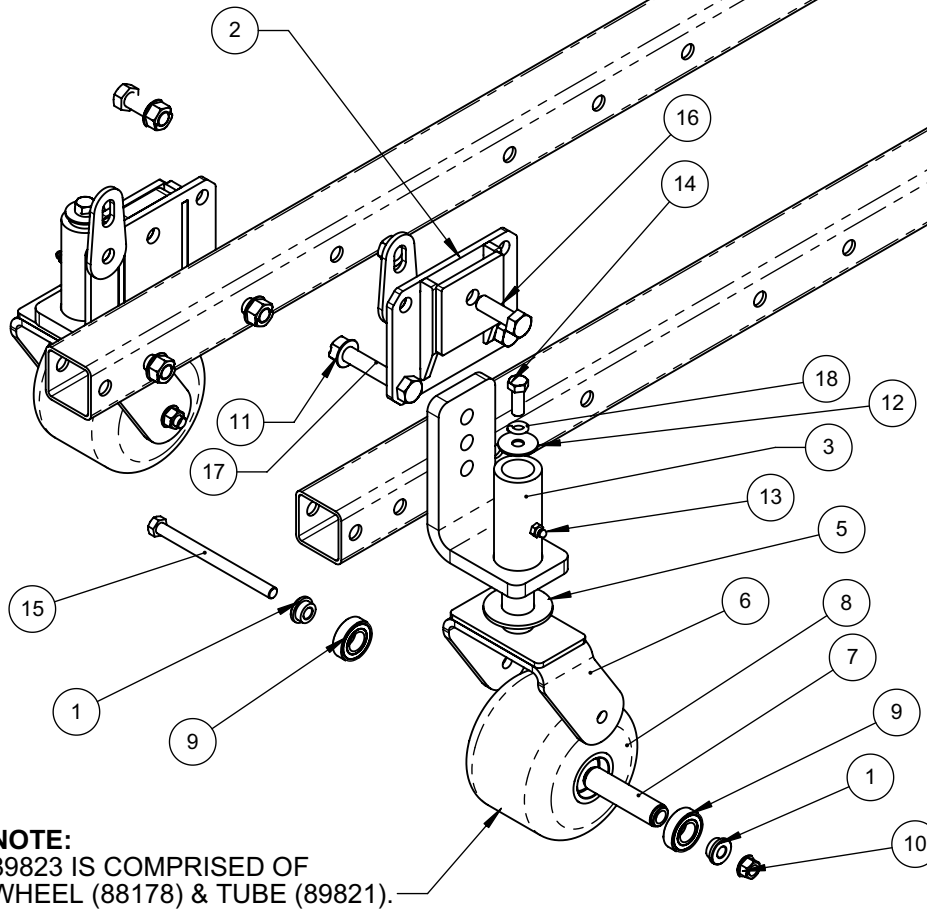
ADJUSTMENT HOLES
(3) ARE PROVIDED



The adjustment distance to the ground is adjusted from the bottom of the wheel to the ground - 3/4 inch (19mm) when the front of the machine is unloaded.

QUADIVATOR INC.
1000 6th Ave. NE
Portage la Prairie, MB
Canada R1N 3C5
www.quadivator.com

Single Caster Wheel Assembly (89350)



ITEM	Default/QTY.	PART	DESCRIPTION
1	4	88540	Spacer - Bushing
2	2	89320	W.A. - Bracket, Caster
3	2	89325	W.A. - Leg, Interframe Caster
4	1	89442	Lug, Ratchet Strap Base
5	2	89753	Washer - Caster
6	2	89765	W.A. - Caster Wheel Mount
7	2	89822	Tube -Bearing Spacer -Castor
8	2	89823	Assy-Rubber Wheel
9	4	89824	Bearing 6003-2RS-AAB
10	2	FHN.375	Flange Lock Nut-3/8 NC Uunitorque
11	6	FHN.5	Flange Lock Nut-Uunitorque -1/2-13NC
12	2	FNW.375x1.25	Fit Fndr Wshr 3/8"IDx1.25"ODx.06Thick
13	2	GZ.25	Grease Zerk 1/4-28 Straight
14	2	HB.375x1	Hex Head Bolt 3/8-16 X 1
15	2	HB.375x5	Hex Head Bolt 3/8-16 X 5
16	2	HB.5x1.5	Hex Head Bolt 1/2-13 X 1 1/2
17	4	HB.5x3	Hex Head Bolt 1/2-13 X 3
18	2	LW.375	Lockwasher-3/8