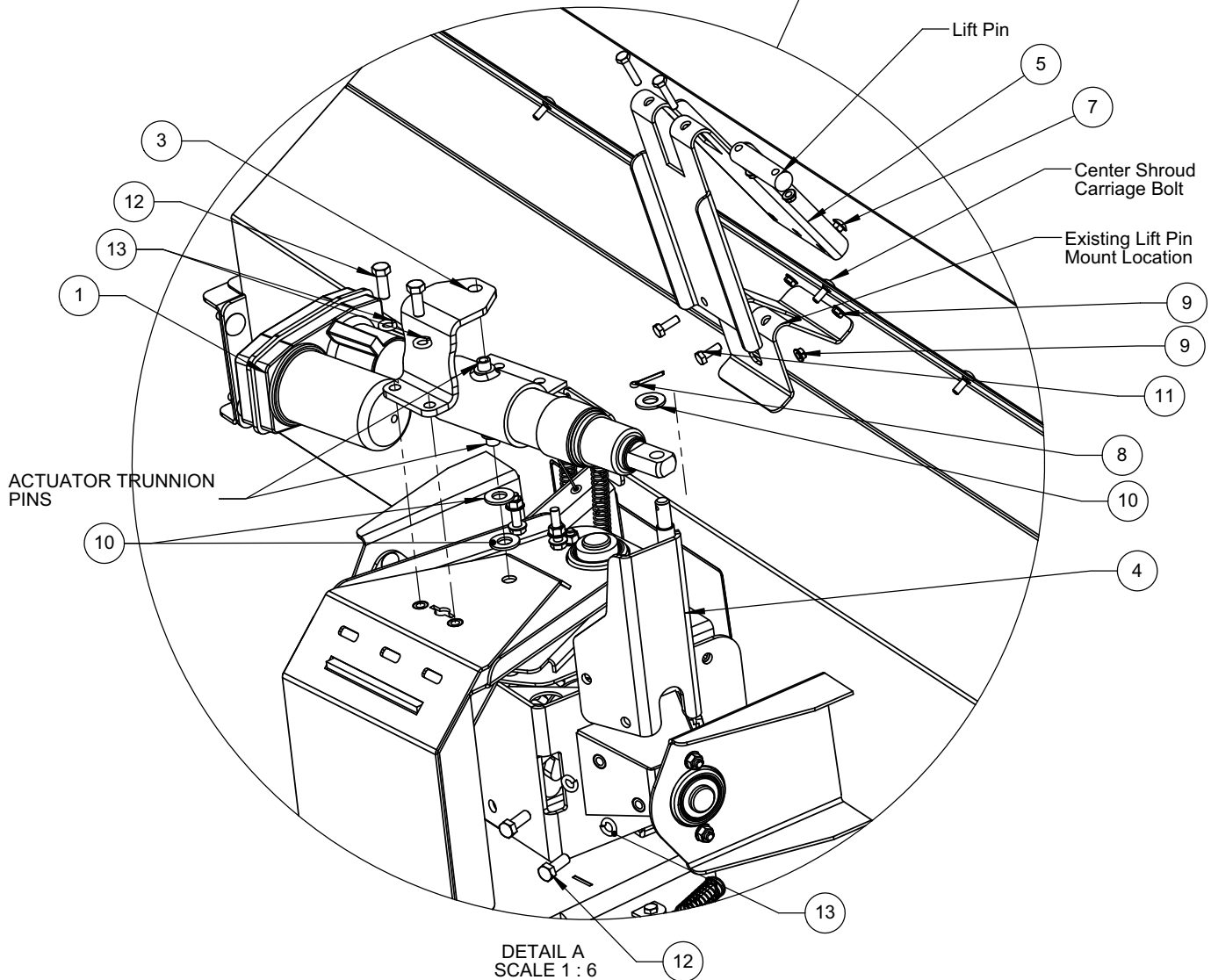
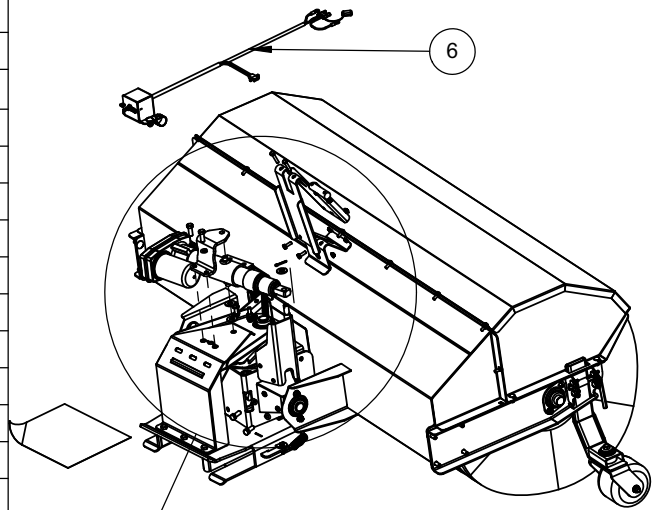


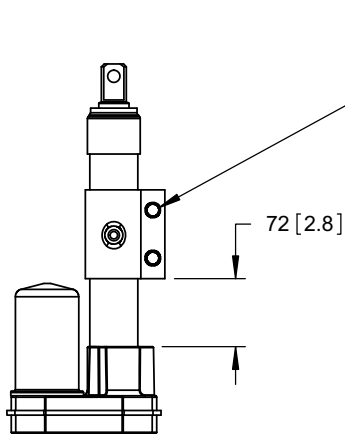
Electrical Pivot Option - Installation

ITEM	QTY.	PART	DESCRIPTION
1	1	86031	Actuator, 4" Stroke, HD, 12VDC 17:1
2	1	86348	Instructions, Power Brush Elect Pivot Kit
3	1	89906	Bracket - Actuator Base
4	1	89915	Weld't -Actuator Rod End
5	1	89921	Bracket -Lift Extension
6	1	89930	Assy - Brush Pivot Switch
7	2	CB.25x3/4	Carriage Bolt 1/4 x 3/4
8	1	CTP.125x1	Cotter Pin 1/8 x 1
9	4	FHN.25	Flange Lock Nut-1/4 NC Unitorque
10	3	FW.5N	Flat Washer 1/2 SAE
11	2	HB.25x.75	Hex Head Bolt 1/4-20 X 3/4
12	6	HB.375x1	Hex Head Bolt 3/8-16 X 1
13	6	LW.375	Lockwasher-3/8

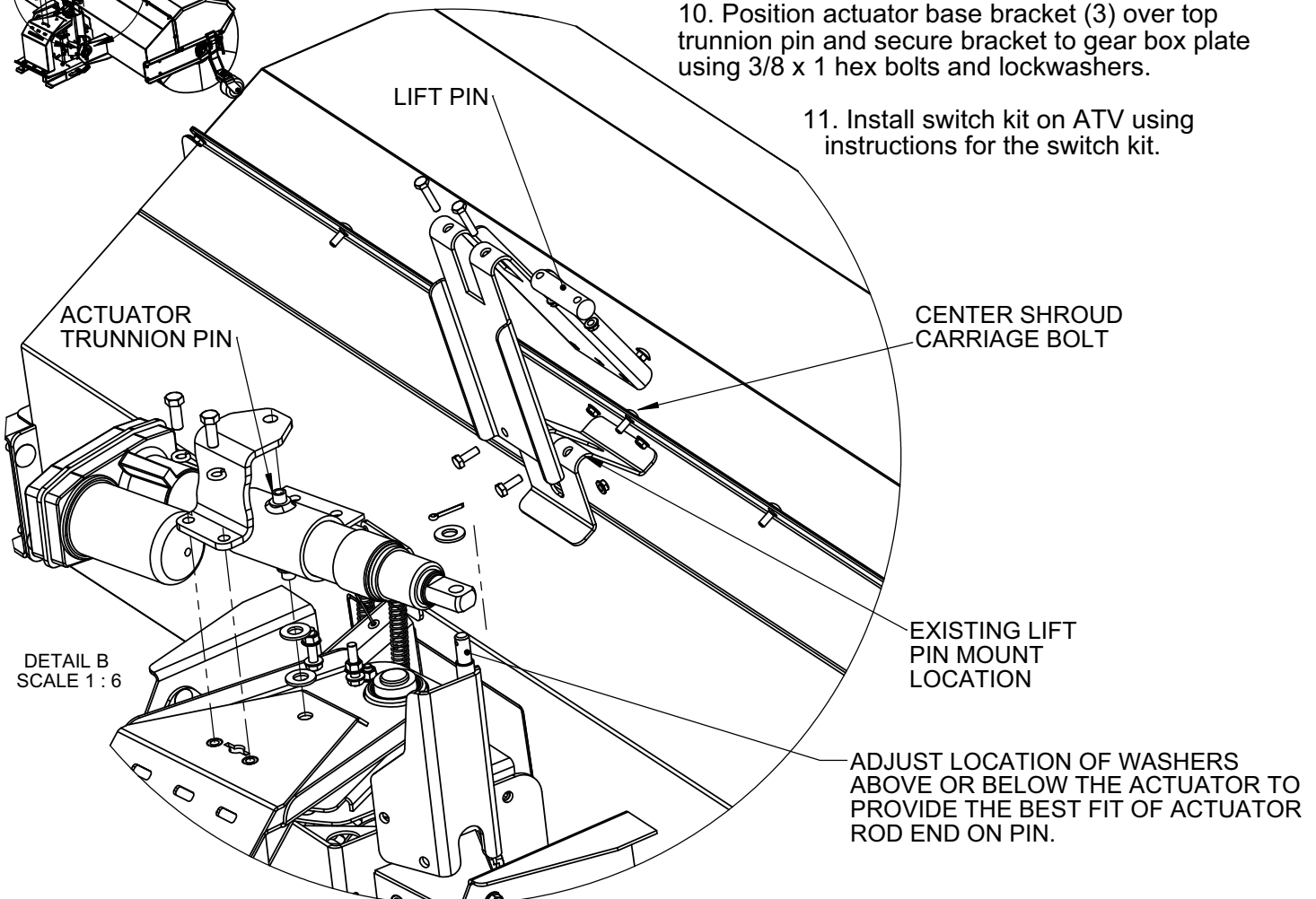
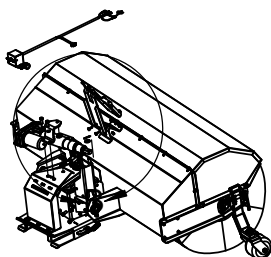


Installation - Electrical Pivot

1. Loosen clamping bolts on actuator trunnion mount. Make sure both bolts are loose.



2. Slide trunnion mount to achieve dimension shown. Secure in place by tightening the clamping bolts.



3. Remove the lift pin from existing mount location by removing 1/4 x 1-1/4 bolts and nuts.

4. Remove center carriage bolt from the top of the shroud.

5. Place new lift extension brackets over existing lift pin mount so that the center hole aligns with the center hole on the shroud where you just removed the bolt from.

6. Re-install bolt securing lift extension bracket to shroud using a 9/32" drill bit. Drill 2 holes in the shroud flange and two holes in the existing lift pin mount bracket.

7. Install 1/4 x 3/4 hex bolts in the rear locations and secure with 1/4" flange nuts. Use 1/4 x 3/4 carriage bolts in the front location.

8. Bolt the actuator rod mount bracket (4) to gear box pivot bracket as shown, using four 3/8 x 1 bolts, lockwashers.

9. Place two 1/2" SAE washers on top of gear box plate. Align with holes as shown. Position actuator trunnion pins through washers and gear box plate.

10. Position actuator base bracket (3) over top trunnion pin and secure bracket to gear box plate using 3/8 x 1 hex bolts and lockwashers.

11. Install switch kit on ATV using instructions for the switch kit.

Wiring Instructions

The following instructions apply to units having a cargo box. Use the guidelines when installing the wiring harness to your unit.

1. Using a tape measure, measure down 2-1/2 inches (63.5mm) from the top left corner inside the front of the cargo box. Then make a mark in the center of the radius on the inside of the box. Drill a 1/2 inch (13mm) hole in the corner radius.

NOTE: Drill only through the inside wall of the cargo box.

2. Remove the battery cover. Disconnect the battery cables. Disconnect the negative battery cable first.

3. Route wiring harness from the battery along the right upper main frame tube following the main wiring harness toward the rear of the ATV, and then over the rear cross-tube next to the voltage regulator. Continue routing the wiring harness along the rear of the cargo box frame. Make sure wiring is away from moving parts and pinch points.

4. Continue routing the wiring harness along the left side of the cargo box toward the front of the box,

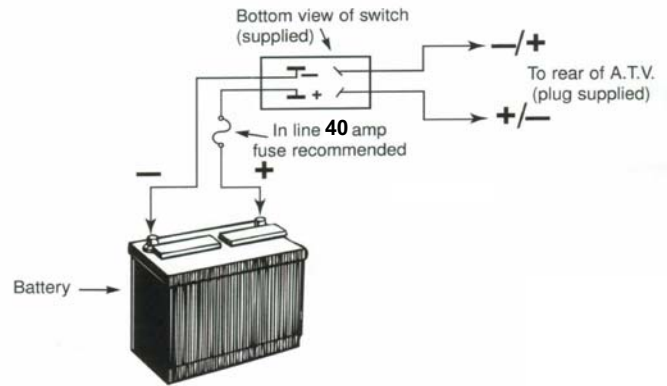
5. Route the wiring harness through the 1/2 inch (13mm) hole. Plug the red wire and black wire connectors to either of the center terminals of the switch. Plug the red/white wire and black/white wire connectors to the remaining terminals of the switch. Secure with ties as needed,

6. Use the supplied clamp for the switch to secure the switch assembly to the cargo box or other position. Position the switch so it is easily operated from the operator's seat of the ATV.

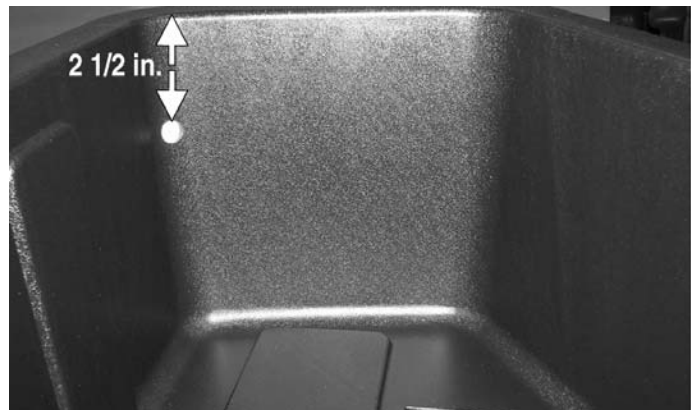
7. Connect the red and black power wires, along the positive and negative cables to the battery. Reinstall all removed parts.

8. Check routing and connections. Wiring harness should be away from pinch points and moving parts.

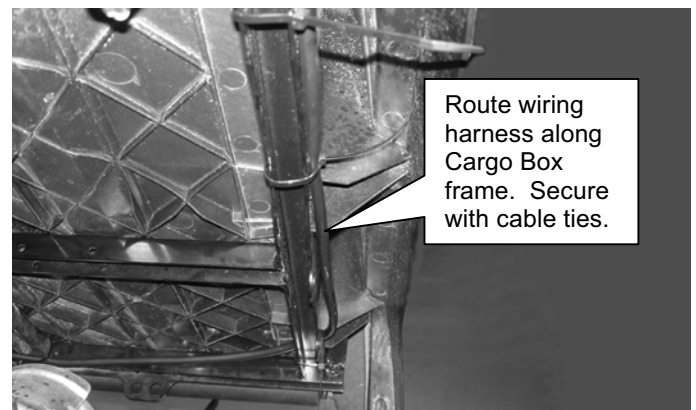
NOTE: After the wiring harness has been connected to the 3-point hitch system; make sure the switch works in in the up/down modes.



Wiring Schematic - Typical



Hole Location for Wiring Harness - Cargo Box



Wiring Harness Routing - under Cargo Box



Wiring Harness Routing to Drilled Hole in Cargo Box

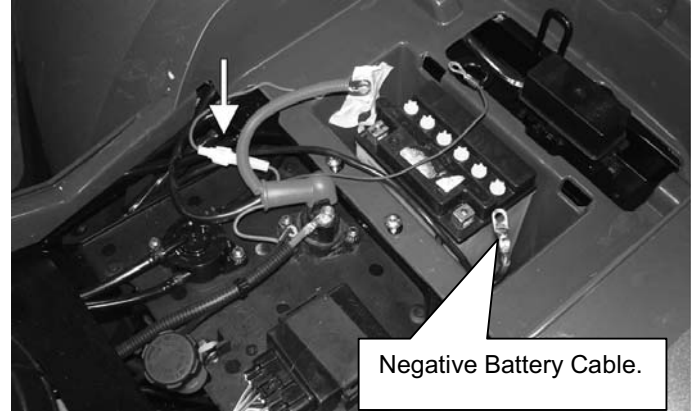
The following wiring instructions apply to units having no cargo box. Use as a guideline when installing the wiring harness.

1. Remove the battery cover. Disconnect the battery cables making sure to disconnect the negative cable first.
2. Next to the right side of the tail light, route the wiring harness up and along the bottom side of the rear fender toward the left side of the ATV. Route the wiring harness away from moving parts and pinch points.
3. Locate switch and wiring harness at a convenient location so it can be worked easily. Clamp switch. Plug the red wire and black wire connectors to either of two center terminals on the switch. Plug the red/white wire and black/white wire into remaining two terminals. Secure wiring harness with ties as needed.

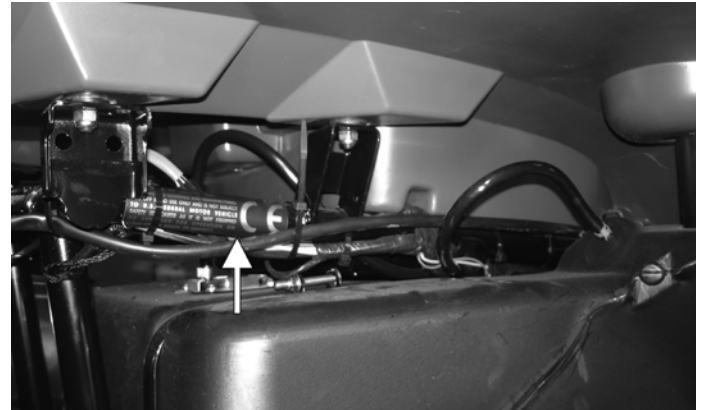
NOTE: Tighten clamp along with the actuator switch securely to its location.

4. Connect the red and black power wires, along with the positive and negatives cables. Reinstall remaining parts.

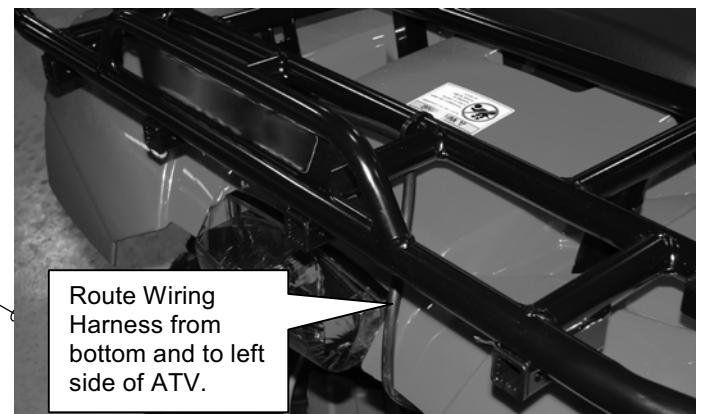
NOTE: After the wiring harness has been connected to the 3-point hitch system, make sure the switch works in conjunction with electrical pivot option.



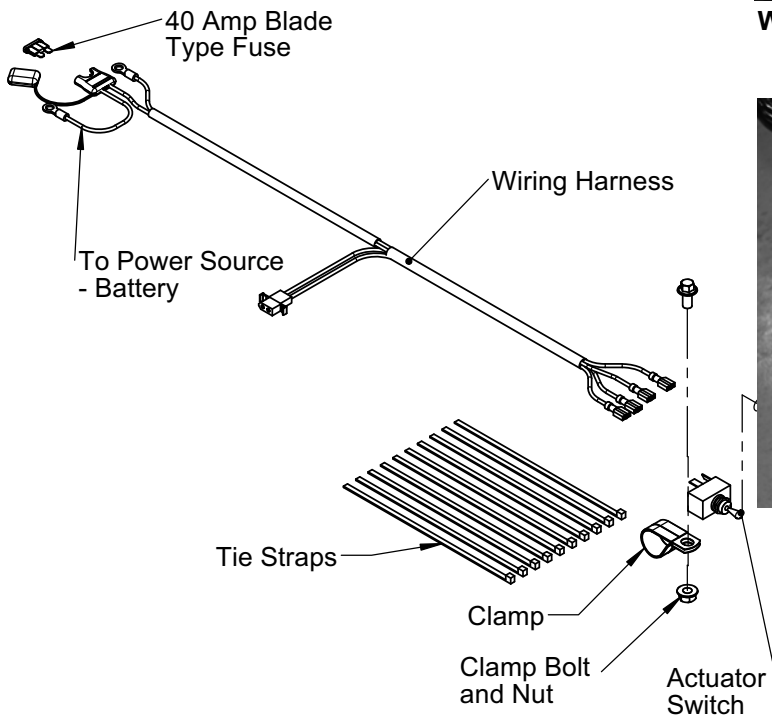
Wiring Connection to Battery - Typical View



Wiring Harness Routing - Between Frame and Shell



Wiring Harness Routing - Rear of Unit



Typical View of Wiring Harness Assembly